



**Intimate Dialogues**  
**Judith Wright**

30 March - 24 April, 2022



In *Intimate Dialogues*, I've come back to my earlier interests. I've always been interested in the vulnerability of the human condition in times of love and loss. Communication and dialogue are necessary tools for trying to heal from, and come to terms with, those situations.

These works have various reference points to 'carnival' and myth. They also introduce animal imagery as a way of connecting with the animal world, beyond our established human connections with each other, our families, and our friends. It's a new metaphor in my work simply because I'm becoming more conscious of our deteriorating natural environments, and the role that humans have had in this. By embracing the animal world, I hope to broaden our human-to-human dialogue to a wider sphere of knowing and being.

— Judith Wright





*Intimate Dialogues #1, 2022*  
Acrylic on Japanese paper  
200 x 200 cm

\$ 12,000

*Intimate Dialogues #2, 2022*  
Acrylic, wood, found object  
110 x 70 x 63 cm

\$ 5,000



*Intimate Dialogues #11*, 2022  
Acrylic on Japanese paper  
200 x 200 cm

\$ 12,000

*Intimate Dialogues #10*, 2022  
Acrylic, wood, found object  
130 x 100 x 66 cm

\$ 8,000



*Intimate Dialogues #12, 2022*  
*Acrylic on Japanese paper*  
150 x 100 cm

\$ 7,500





*Intimate Dialogues #13, 2022*  
Acrylic on Japanese paper  
150 x 100 cm

\$ 7,500



*Intimate Dialogues #14, 2022*

Acrylic on wood  
130 x 160 x 23 cm

\$ 8,700





*Intimate Dialogues #15, 2022*  
Acrylic on Japanese paper  
100 x 200 cm

\$ 9,000



*Intimate Dialogues #16, 2022*  
Acrylic, wood, found object  
78 x 82 x 16 cm

\$ 5,000



*Intimate Dialogues #3, 2022*  
Acrylic on Japanese paper  
100 x 330 cm

\$ 12,000





*Intimate Dialogues #4*, 2022  
Acrylic on Japanese paper  
100 x 330 cm

\$ 12,000



*Intimate Dialogues #5, 2022*  
Acrylic on Japanese paper  
100 x 200 cm

\$ 9,000



*Intimate Dialogues #6, 2022*  
Acrylic on Japanese paper  
100 x 200 cm

\$ 9,000





*Intimate Dialogues #7, 2022*  
Acrylic on Japanese paper  
100 x 150 cm

\$ 7,500



*Intimate Dialogues #8, 2022*  
Acrylic on Japanese paper  
100 x 150 cm

\$ 7,500



*Intimate Dialogues #9*, 2022

Acrylic on wood  
200 x 100 x 60 cm

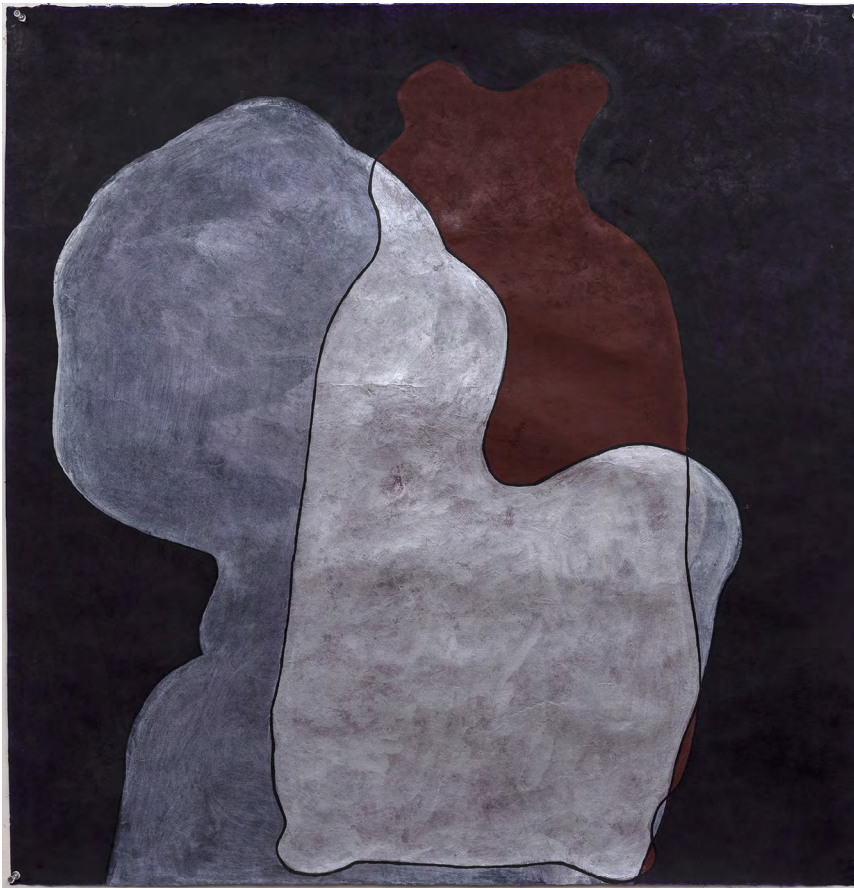
\$ 8,500





*Intimate Dialogues #17, 2022*  
Acrylic on Japanese paper  
100 x 100 cm

\$ 6,000



*Intimate Dialogues #18, 2022*  
Acrylic on Japanese paper  
100 x 100 cm

\$ 6,000



*Intimate Dialogues #19, 2022*  
Acrylic on Japanese paper  
100 x 100 cm

\$ 6,000





*Intimate Dialogues #20, 2022*  
Acrylic on Japanese paper  
100 x 100 cm

\$ 6,000



*Intimate Dialogues #21, 2022*  
Acrylic on Japanese paper  
100 x 100 cm

\$ 6,000



*Intimate Dialogues #22, 2022*  
Acrylic on Japanese paper  
100 x 100 cm

\$ 6,000



54 Vernon Terrace, Teneriffe QLD 4005

[info@janmantonart.com](mailto:info@janmantonart.com)

[janmantonart.com](http://janmantonart.com)

0419 657 768

Front Cover Image: *Intimate Dialogues #5*, 2022,  
Judith Wright, acrylic on Japanese paper 100 x 200 cm.

All artwork images photographed by Carl Warner.

Gallery Director  
Jan Manton

Gallery Manager  
Taylor Hall